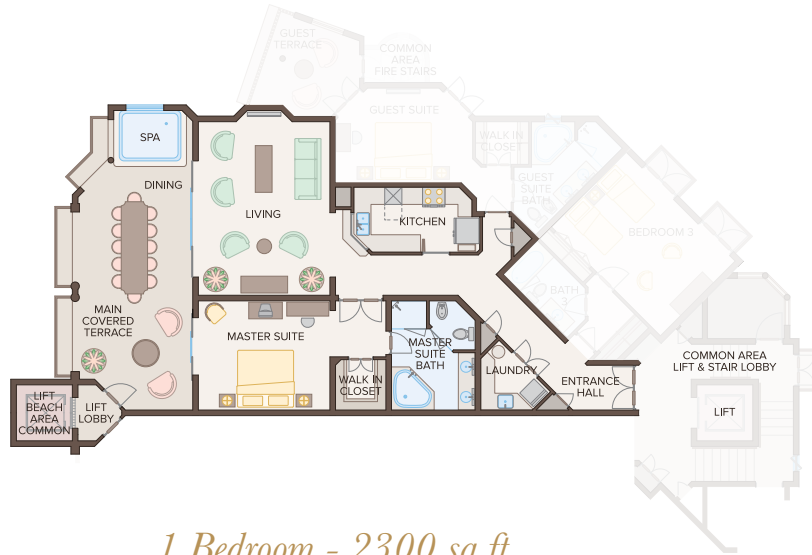


PREMIUM BEACHFRONT RESIDENCES



SAINT PETER'S BAY BARBADOS



1 Bedroom - 2300 sq.ft.



2 Bedroom - 2500 sq.ft.



3 Bedroom - 2700 sq.ft.

VILLA SPECIFICATIONS & FEATURES

- ❖ Comfortably accommodates 2 adults (1 bed home), 4 adults (2 bed home), 6 adults (3 bed home)
- ❖ Complimentary Wi-fi
- ❖ Fully Equipped Kitchen and Laundry Areas
- ❖ In room Safes
- ❖ 50" Smart Television with Cable TV
- ❖ Private Telephone with Direct Dial
- ❖ Hair Dryer

- ❖ Hypoallergenic Pillows
- ❖ Bathrobes & Slippers
- ❖ Daily Housekeeping and Nightly Turn-down Service
- ❖ Travertine Floors
- ❖ Granite Vanities & Kitchen Counters
- ❖ Stainless Steel Kitchen Appliances
- ❖ Coral Stone Crown Moulding & Wall Sconces
- ❖ Floor to Ceiling Marble in Bathrooms

- ❖ Locally Crafted Cedar Wood Doors & Closet Doors
- ❖ Fully Airconditioned and Ceiling Fans Throughout
- ❖ Terrace Beach Lift (Upper Floors Only)
- ❖ Spacious Terrace with Spa Pool
- ❖ Effortless Large Glass Sliding Doors

The plans and renderings shown are artistic impressions intended for visual purposes only. They are approximate and not necessarily to scale.